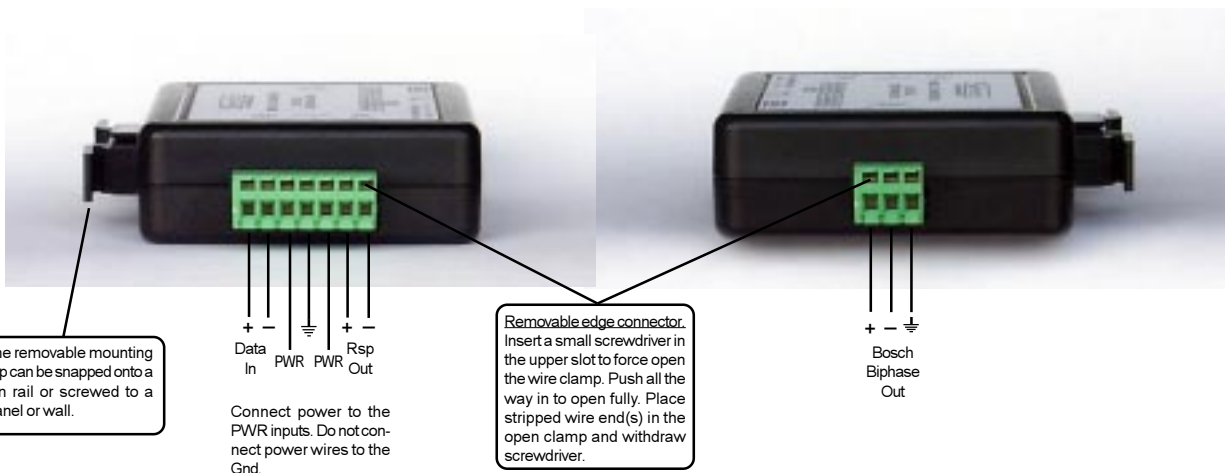
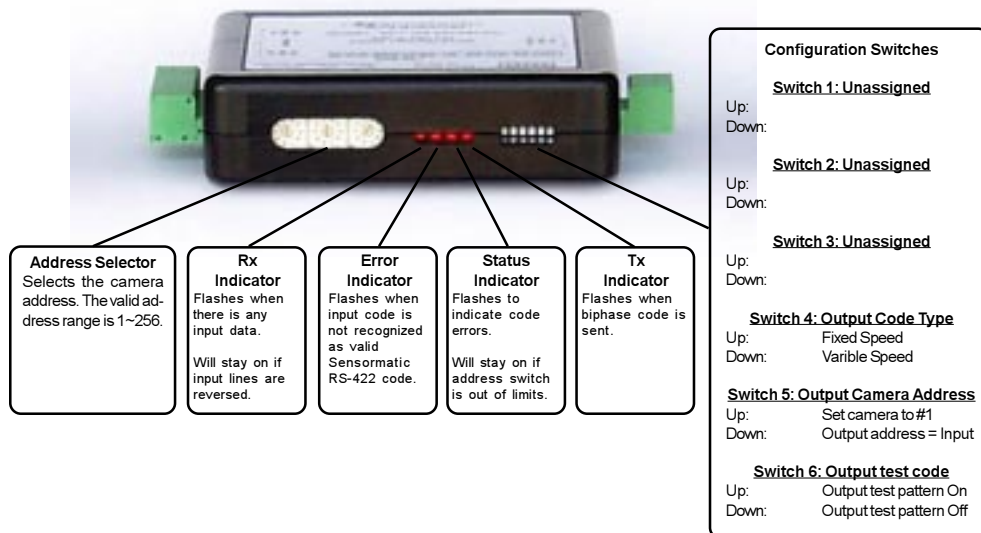


SCT-100-SENSORMATIC-BOSCH

Sensormatic RS-422 to Bosch Biphas Code Translator

The code translator converts Sensormatic RS-422 camera control code into Bosch biphas code for a single P/T/Z. Only camera commands for the address matching the Address Selector switches will be converted.

A test mode sends a continuous square movement pattern to the P/T/Z so the wiring and addressing between the translator and the P/T/Z can be checked without a Sensormatic controller.



SPECIFICATIONS

Size: 4.5" x 3.5" x 1.25"
 Weight: 0.5 lb
 Power: 9Volt to 15Volt AC or DC at 75ma
 Environmental: Indoor use only

Sennetech, Inc. 6455 W. Bath Rd, Perry, MI 48872 U.S.A. Ph (517) 675-1150 Fax (517) 675-1151

www.sennetech.net

NOTES

Switch Settings

Any changes in switch settings are effective immediately, they are not read only on power up.

Output Code

Set switch 4 On for fixed speed code if connecting to older Burle receivers that can not accept variable speed code.

Addressing

Only camera control code for the camera number set by the Address Switches is converted.

If switch 5 is ON, the output code is always addressed to camera #1. Otherwise, the output code address is determined by the Address Switches.

Indicators

The **Rx** LED will flash when there is data on the input. If it is on constantly, the input wires may be reversed.

The **Error** LED will flash if the input code is not recognized as valid Sensormatic code.

The **Status** LED will light if the address switches are not set to a valid address (1~256).

The **Tx** LED flashes once for each biphase packet sent.

OPERATION

PTZ

The code translator converts pan, tilt, zoom, focus and iris code directly into Bosch code

Additional commands are converted according to the following table.

	<u>SENSORMATIC COMMAND</u>	<u>BOSCH COMMAND</u>
Presets	Mark Target 1~7 Go to Target 1~7	Program preset 1~7 Go to preset 1~7
Patterns	Run Pattern 1 Run Pattern 2 Run pattern 3 / Peel	Autopan between limits Playback recording Autoscan
	Define Pattern 2 End of Pattern	Start recording End recording