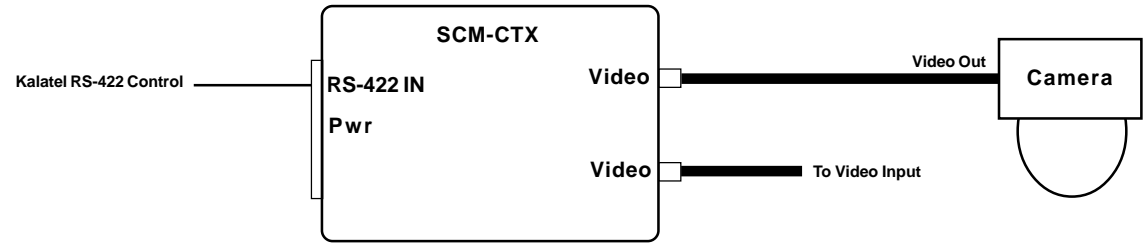
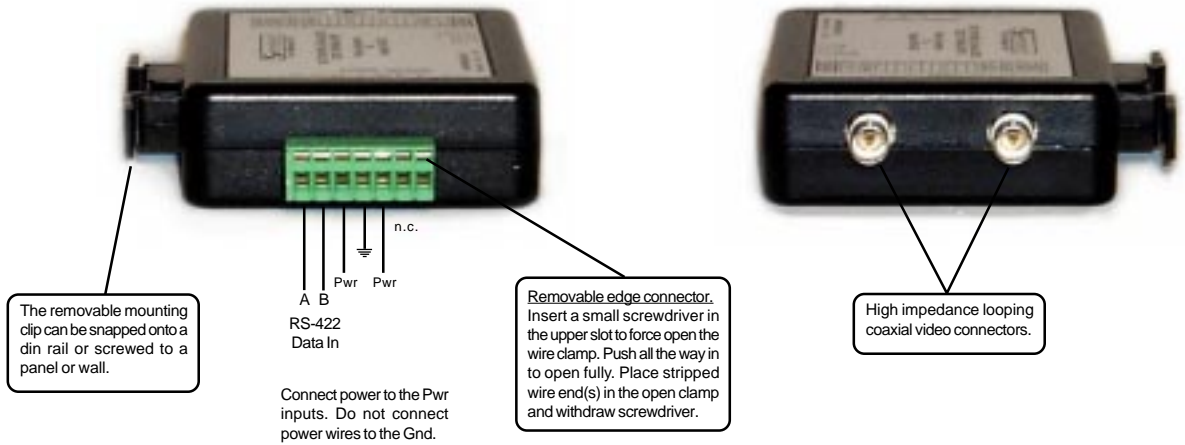
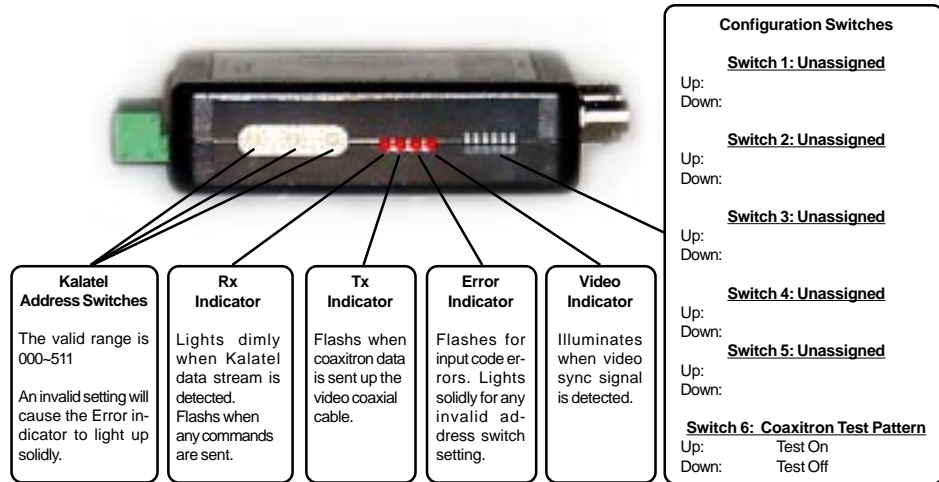


# SCT-CTX-Kalatel-Pelco

## Kalatel RS-422 to Pelco Coaxitron Code Translator

The Code Translator receives Kalatel Digiplex III RS-422 camera control code @ 4800 baud and converts it into Pelco coaxitron control code for a single camera.



### SPECIFICATIONS

- Size: 4.5" x 3.5" x 1.25"
- Weight: 0.5 lb
- Power: 9Volt to 15Volt AC or DC at 75ma
- Environmental: Indoor use only

Sennetech, Inc. 6455 W. Bath Rd. Perry, MI 48872 U.S.A. Ph (517) 675 1150 Fax (517) 675 1151

www.sennetech.net

## **INSTALLATION**

Insert the code translator in the video coaxial cable between the camera and the matrix. The video inputs are a high impedance loop so either can be in or out.

Connect the RS-422 control wires to the code translator's RS-422 in connectors. The control code must be Kalatel /GE Digiplex III at 4800 baud.

Set address selector switches to the same number the controller is sending for this camera.

The video indicator will light when there is video present from the camera on the coaxial cable.

When the code translator locks onto the Kalatel data stream, the Rx Indicator will light at a reduced brightness. It will flash brighter when camera control commands are detected.

## **OPERATION**

### **PTZ**

The code translator converts pan, tilt, zoom, focus and iris commands directly.

### **Presets**

Kalatel has a maximum of 63 presets. Pelco uses presets from 80~99 for special commands. In order to access these functions, the code translator adds 40 to all preset numbers from 40 and up. Thus to access dome configuration menu using Pelco command [Pgm preset 95]. from the Kalatel controller send [Pgm preset 55].

When menu is activated, use titl to move cursor, iris open to select, and iris close to exit.

### **Tours**

Kalatel run tour command is converted into Pelco run pattern command.

Newer domes can record patterns from the configuration menu

### **Aux 1**

Kalatel Aux1 or Open command is converted to Pelco Aux1 On command.

Kalatel Aux2 or Close command is converted to Pelco Aux1 Off command.

(Aux1 On activates wiper on Pelco Esprit.)

## **TROUBLESHOOTING**

No Video indicator: No video signal detected

proper termination of the video cable is important for reliable coaxitron operation. The cable should be terminated with a single 75W resistor.

Rx indicator solid bright:

Input wires reversed.

Both Rx and Error indicators flash, possible causes:

Controller sending other than Kalatel Digiplex III camera control data.

Incorrect wiring

Only Rx indicator flashes when data is sent, no Error or Tx indicator: wrong address.

Error indicator on solidly:

Invalid address selected, must be in the range of 001 ~ 511